

# CP-120

## Features

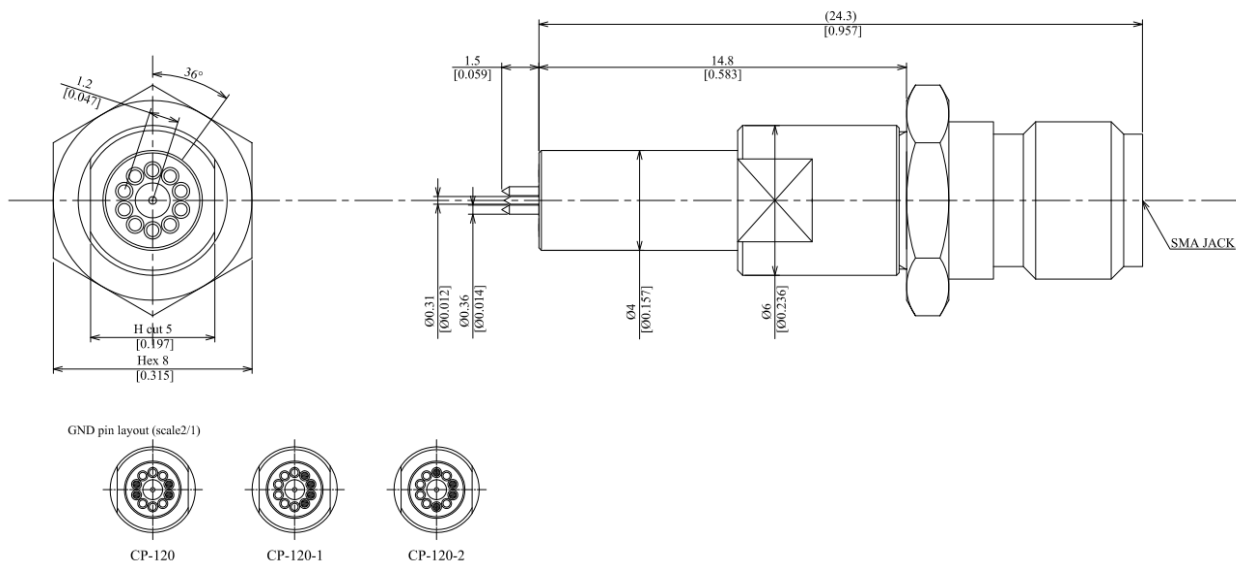
- インピーダンス: 50 Ω
- 周波数範囲: DC to 20 GHz



## Electrical specifications

Parameter	Unit	Min	Typ	Max	Note
Frequency range	GHz	20			
Insertion loss	dB			1	
Return loss	dB			10	
DC resistance	Ω		1		
DC current	A			1.5	測定環境温度 25°C

## Dimension mm [inch]



## S-parameter

